



FINAL CONFERENCE

CONNECTING SHIPPING
AND TEN-T CORE
NETWORK CORRIDORS

Logistic Single Window

Institutional, logistics & Industry
perspectives

28 - 29 OCTOBER 2015

LA SPEZIA



Co-financed by the European Union
Trans-European Transport Network (TEN-T)



WiderMoS FINAL CONFERENCE

CONNECTING SHIPPING AND TEN-T CORE NETWORK CORRIDORS
28 - 29 OCTOBER 2015 LA SPEZIA

Co-financed by the European Union
Trans-European Transport Network (TEN-T)



Logistic Single Window

Global collaborative logistics

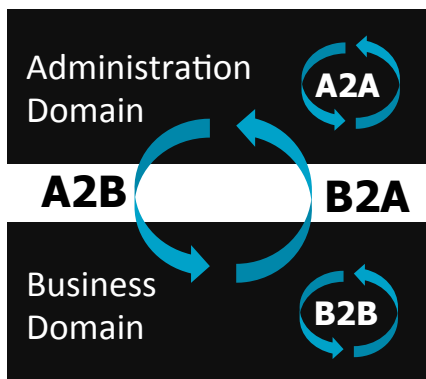


Infrastructure challenges

Coordinated development

Core network as driver

Infostructure challenges



New ways of doing logistics

Focus on Clients expectations
(Logistic Service Clients)

Collaboration between LSP
(Logistic Service Providers)





Client expectations

Improve visibility across the supply chain

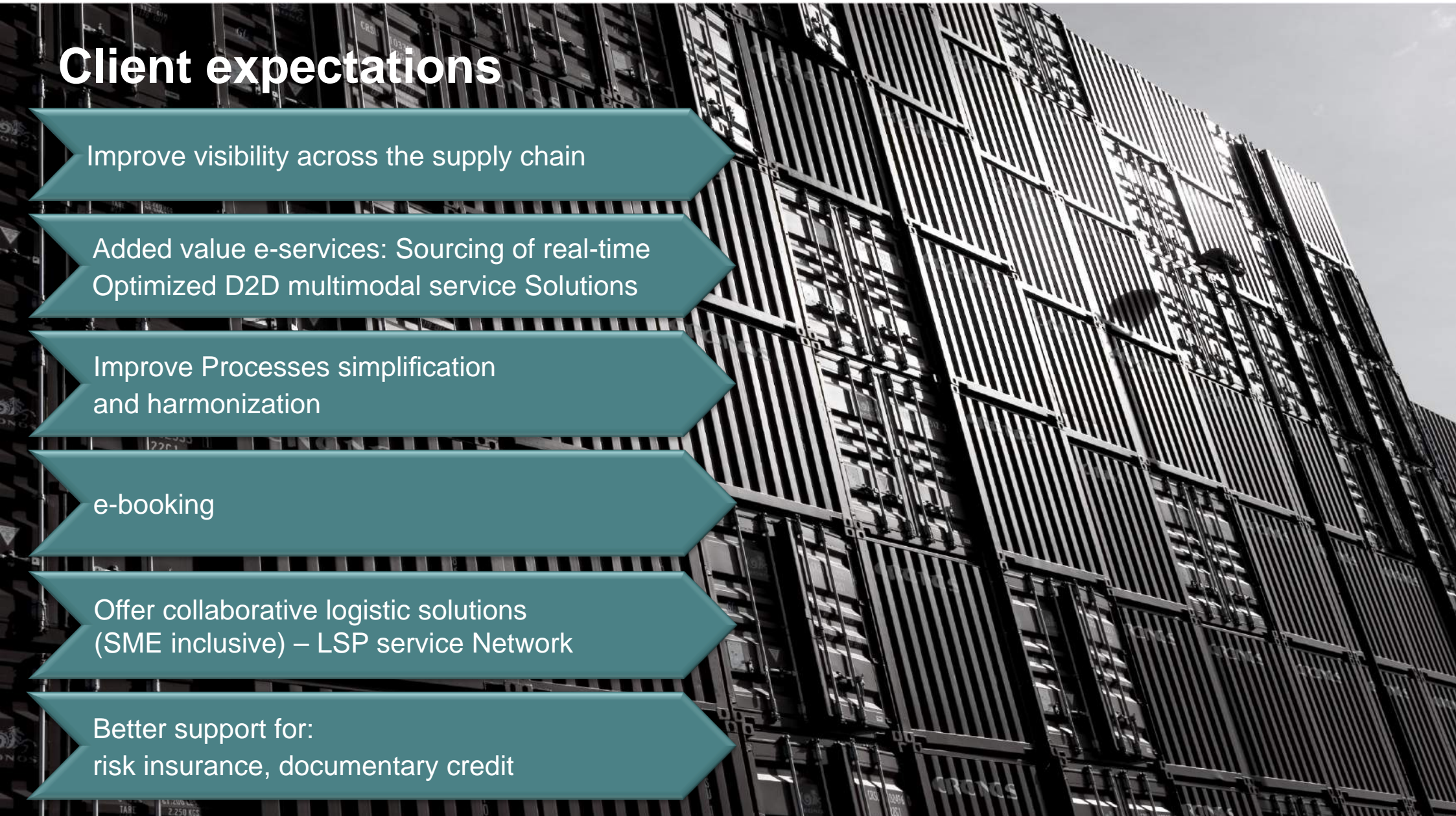
Added value e-services: Sourcing of real-time
Optimized D2D multimodal service Solutions

Improve Processes simplification
and harmonization

e-booking

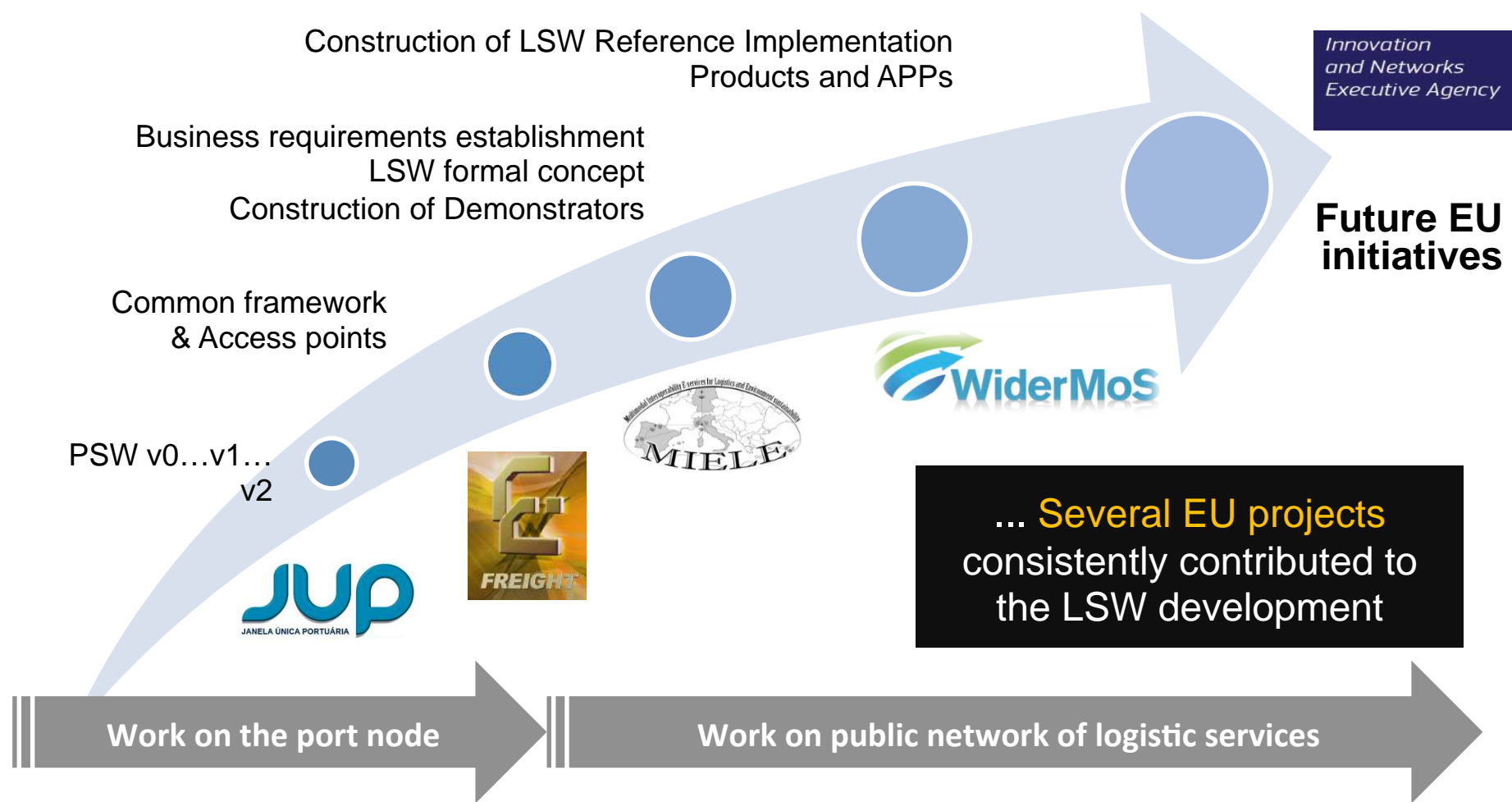
Offer collaborative logistic solutions
(SME inclusive) – LSP service Network

Better support for:
risk insurance, documentary credit



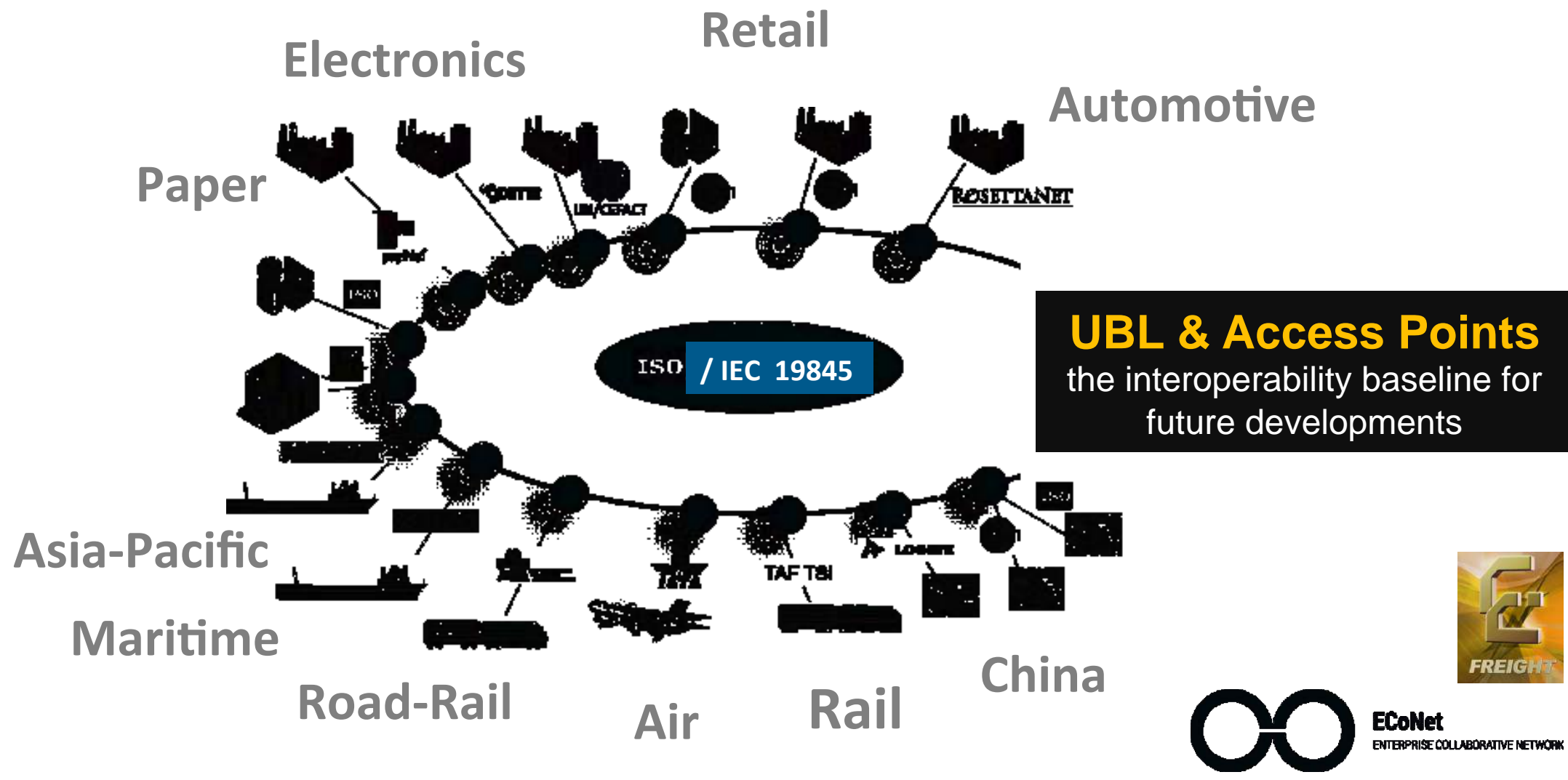
Long term persistent strategy

Dissemination of LSW Concept
Increase platforms network
Increase of interoperating services offer





e-Freight initiative



LSW formal concept



B2B domain...

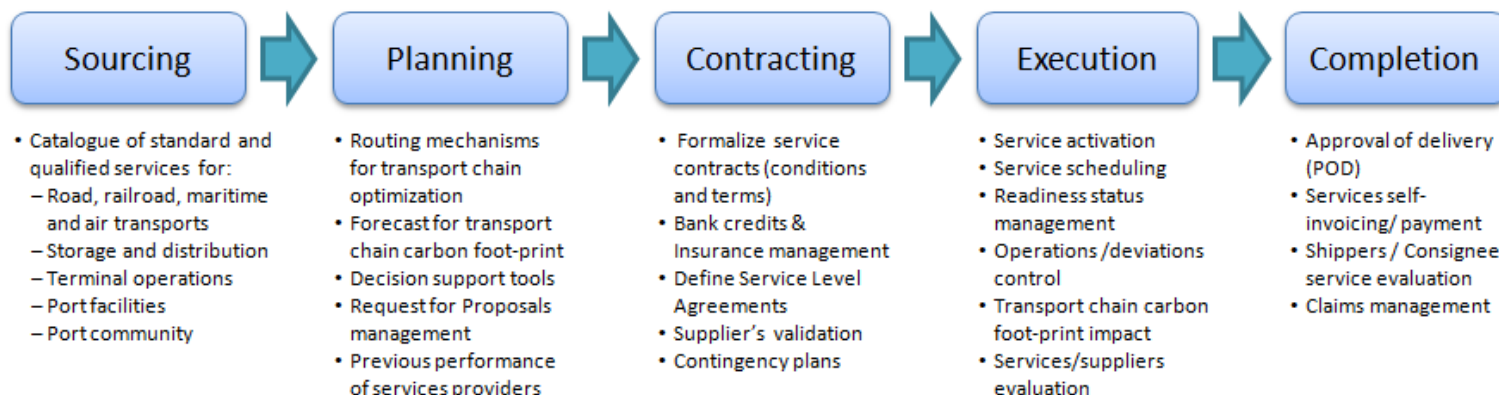
The LSW is a marketplace of business interoperable platforms, developed and supported by several organisations and commercial contexts, capable of providing its clients with a real-time and integrated offer of D2D logistic services



LSW business functions



Services Demand View



Services Supply View



Monitoring & Reporting

- Track & Trace
- Occurrences tracking and reporting
- Information requests



LSW ecosystem

Sourcing into catalogues spread out on LSP sites is by itself a service

Routing services throughout catalogues provide D2D solutions

TMS is also important and critical for the industry

Control Tower will provide integrated execution status info

Mobile Apps will provide fast deploy and cheap access to all companies



